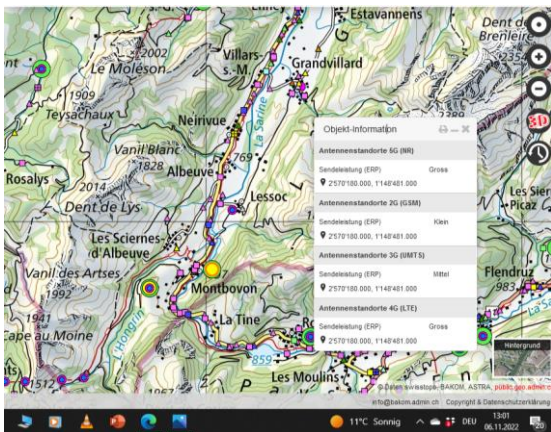


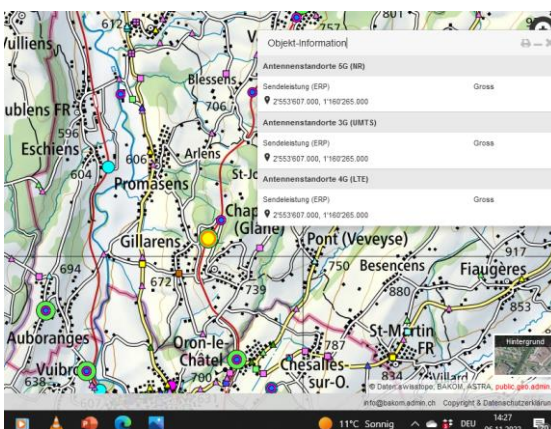
# 5G-Gross-Senderstandorte im Kanton Freiburg - Stand am 09.11.2022: 20

Aktuelle Einwohnerzahl pro Kanton: **318.714** Anzahl Sender **20** Eibwohner pro Sender **15.935**

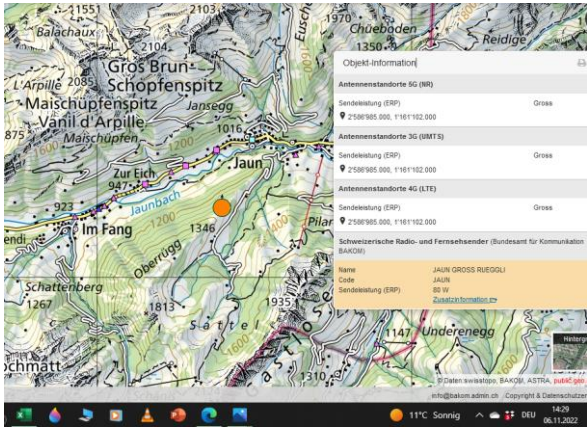
1. Zürich: 1,52 Mio.
2. Bern: 1,03 Mio.
3. Waadt: 799'145
4. Aargau: 678'207
5. St.Gallen: 507'697
6. Genf: 499'480
7. Luzern: 409'557
8. Tessin: 353'343
9. Wallis: 343'955
- 10. Freiburg: 318'714**
11. Basel-Landschaft: 288'132
12. Thurgau: 276'472
13. Solothurn: 273'194
14. Graubünden: 198'379
15. Basel-Stadt: 194'766
16. Neuenburg: 176'850
17. Schwyz: 159'165
18. Zug: 126'837
19. Schaffhausen: 81'991
20. Jura: 73'419
21. Appenzell Ausserrhoden: 55'234
22. Nidwalden: 43'223
23. Glarus: 40'403
24. Obwalden: 37'841
25. Uri: 36'433
26. Appenzell Innerrhoden: 16'145



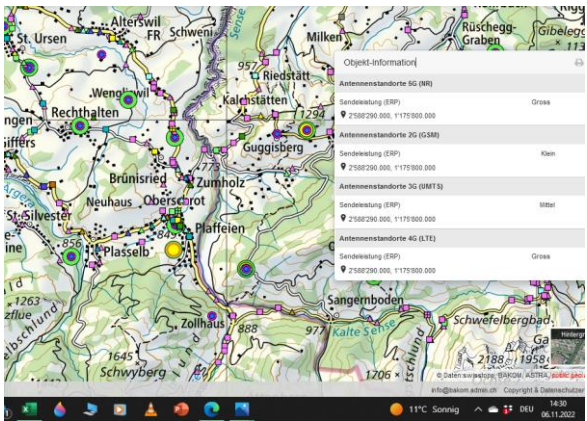
Montbovon



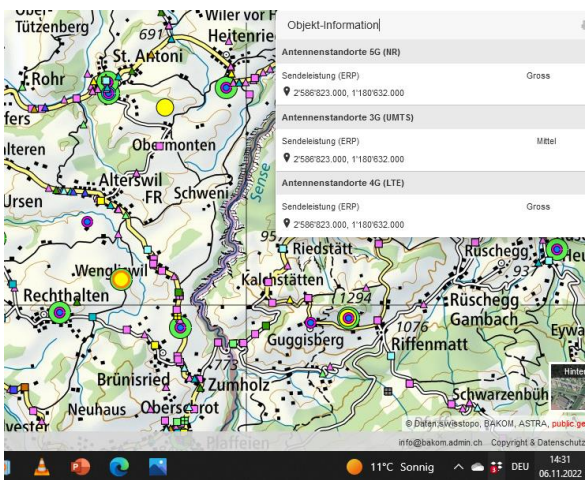
Gillarens



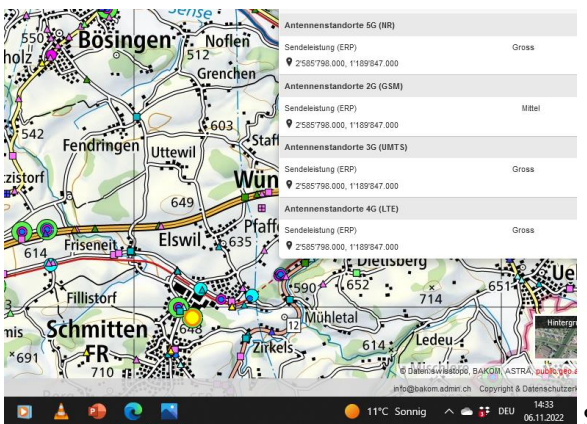
Jaun



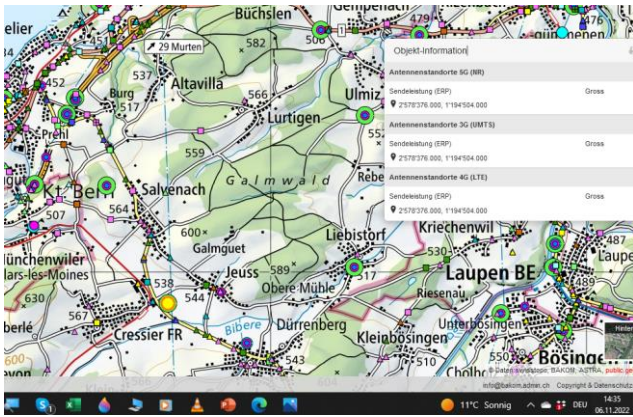
Plaffeien



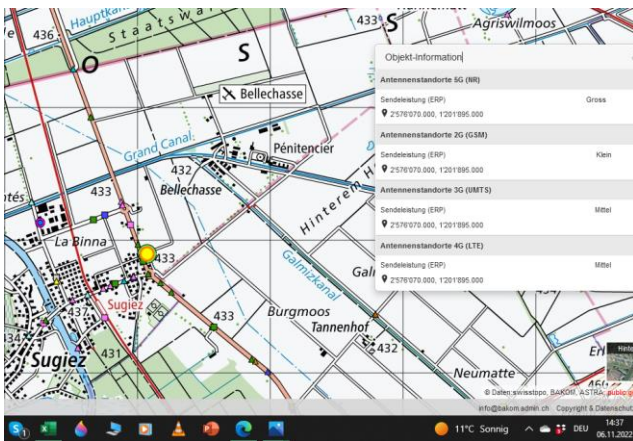
Wengliswil



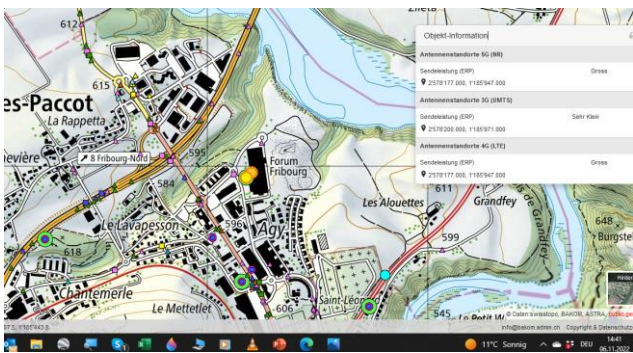
Schmittien



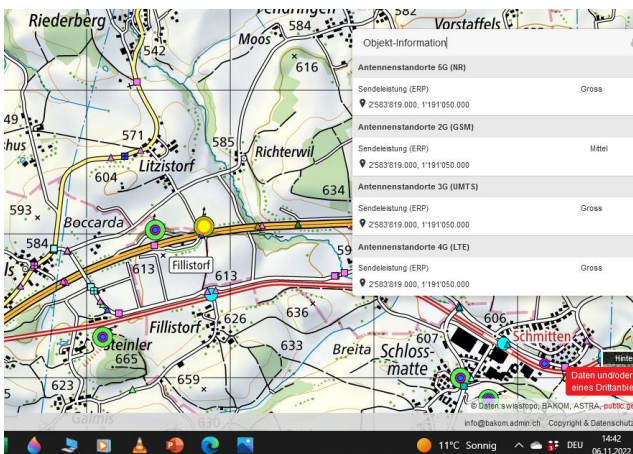
Cressier



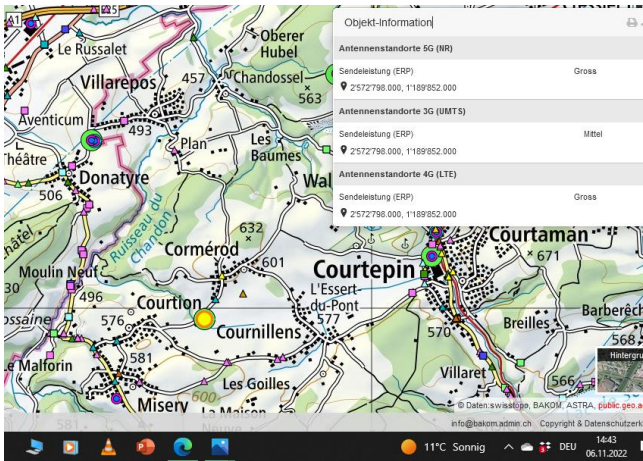
Sugiez



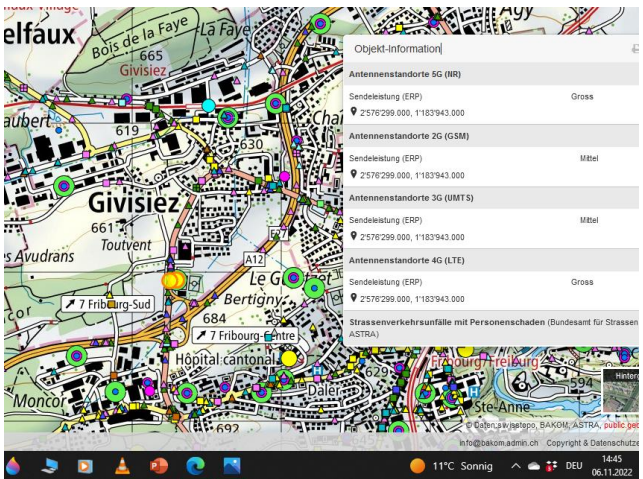
Granges-Paccot / Agy



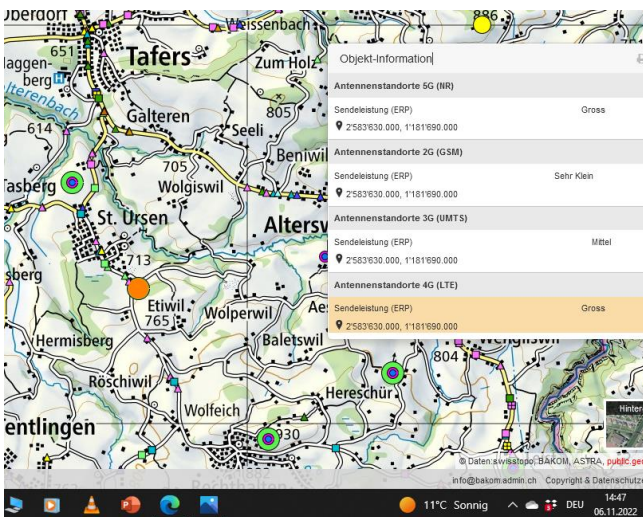
Fillistorf Rastplatz O



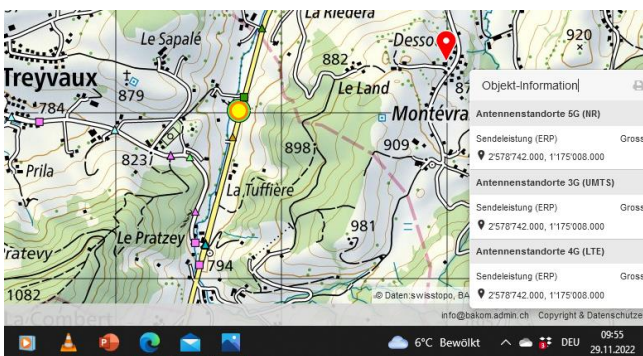
Courtepin



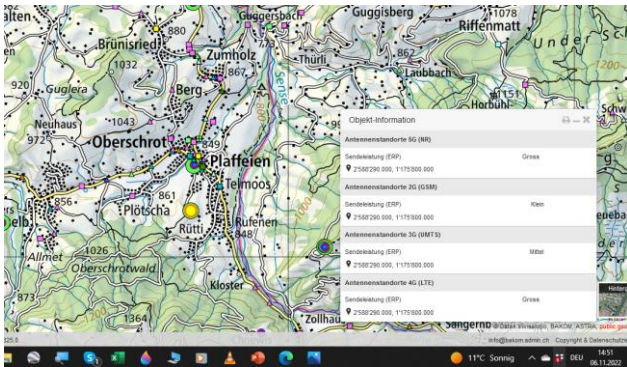
Givisiez



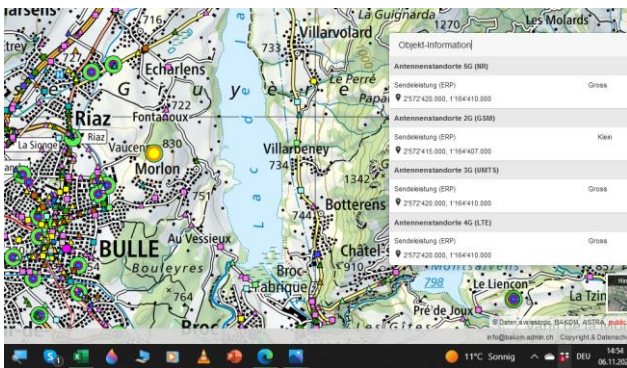
Etwil / St. Ursen



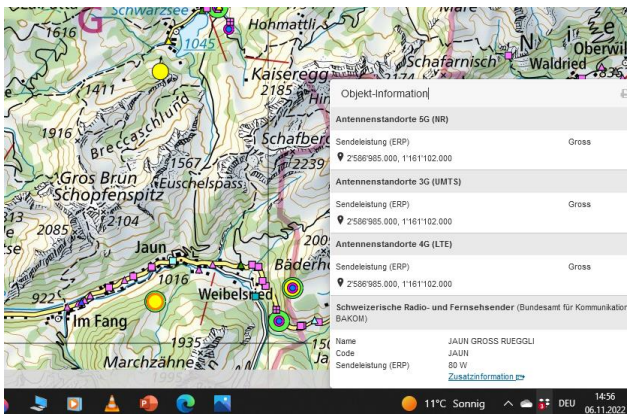
Treyvaux



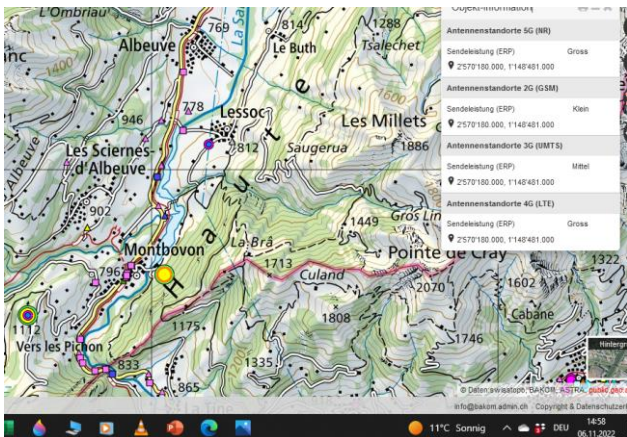
Plaffeien süd



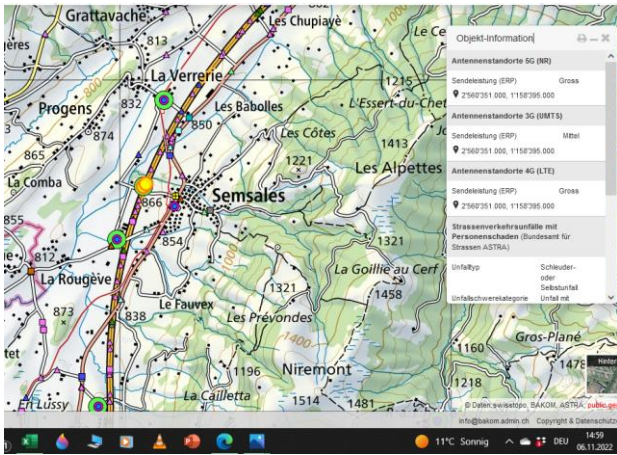
Bulle



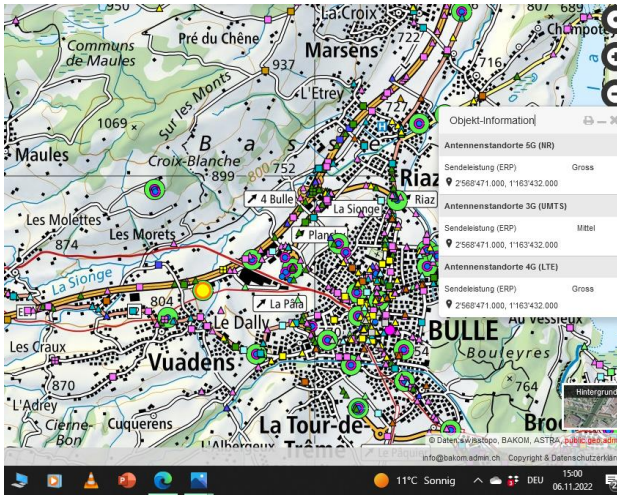
Jaun



Montbovon



Semsales



Vuadens